

# **M** MAINTENANCE SYSTEMS PTY LTD

Head Office: 34 Derwent Park Road, Phone: (03) 6273 4955 Fax: (03) 6273 4977  
Derwent Park Tasmania 7009. Email: admin@maintenancesystems.com.au  
Web Site: www.maintenancesystems.com.au

## **INVESTING IN GROUT PLACEMENT TECHNOLOGY ADDS TO OUR COMPREHENSIVE RANGE AND EXPERTISE EPOXY GROUTING – ROLLS ROYCE TURBINE TAMAR VALLEY POWER BELL BAY**



Generator Set & Gas Turbine  
Sloping Base 80mm thick,  
5 metre wide x 24 metre long required  
placement of 4100 litre epoxy grout



Project completed and a sigh  
of relief at the huge Epoxy  
Placement in a short time frame



Cementitious Grouting to Mitsubishi Steam Turbines  
These machines were on elevated platforms making  
access difficult and pumping necessary.



Inspection of Epoxy Grout after  
placement under new waste  
water pump, Hobart



# NORSKE-SKÖG PAPER MILL, BOYER - SOFTWOOD CONVERSION PROJECT



Installation by high volume  
Mixer & Pump system of  
bulk Epoxy to debarker  
& Chipper Bases



**BASE PLATES WITH ANCHOR BOLTS &  
SHIMS READY FOR PLACEMENT**



**CONCRETE PEDESTAL WITH  
BASE PLATES IN POSITION  
WITH FORMERS**



**OUR INVESTMENT IN PURPOSE BUILT  
MIXING AND PLACING EQUIPMENT  
MET THE CHALLENGE**



**DEBARKING DRUM BOGIES IN  
POSITION AFTER EPOXY GROUTING**

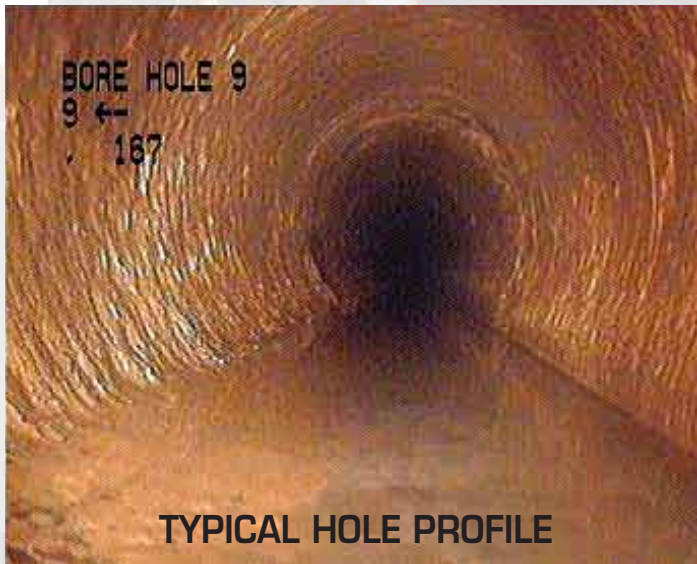


# NYRSTAR ZINC PRODUCTION FACILITY, RISDON

Cementitious Grout Placement to annular section around plastic relief pipes



## GROUTING INVOLVED DEVELOPING OF CUSTOM GROUT PACKERS TO INFLATE 12 METRES IN FROM FACE



TYPICAL HOLE PROFILE

### PROBLEM

13 holes, 100 metre, 200mm diameter were irregular and oval.  
How to seal outside over initial 12 metre?

### SOLUTION

Maintenance Systems staff developed an economical inflatable packer and were able to place it 12 metres inside the hole and successfully grout the annulus outside the pipe

## ST PATRICKS CHURCH, COLEBROOK - RESTORED BY PUGIN FOUNDATION

Drilling & Placement of Cintec Stainless steel anchors to stabilise & strengthen walls, roof & tower





# MONA MUSEUM MOORILLA, HOBART

Earth stabilisation by utilising reinforced sprayed shotcrete with steel trowel finish



Initial placement of shotcrete over reinforcement steel



Placement & Cut back to form required Profile



**SHOTCRETE SPRAYING IN PROGRESS**

Since 1990 Maintenance Systems Pty Ltd has continued to develop and utilize World Leading Technologies associated primarily with concrete and masonry repair, specialized coatings, industrial flooring systems and waterproofing & grouting



**LET OUR EXPERIENCE ASSIST  
WITH PLANNING, MATERIAL  
SELECTION & PLACEMENT  
TECHNIQUES**

**PH (03) 6273 4955**

Email: [admin@maintenancesystems.com.au](mailto:admin@maintenancesystems.com.au)